

TECHNICAL SPECIFICATIONS For Metrotile Royal

METROTILE PRESSED METAL TILES

The following information contains the specifications of Royal Tile manufactured by Ross Roof Group Ltd.

STANDARD SPECIFICATIONS E2/AS1 8.3

The following standard specifications should be adhered to in both materials and workmanship.

NZS 2295: 2006 Breather Type Building Papers

NZS 4217: Standard for Pressed Metal Tile Roofs

NZS 3604. AS 3566 Class 3 Nails for pressed metal tiles

OTHER INFORMATION SOURCES AVAILABLE

- Manufacture's installation manual

MATERIALS

E2/AS1 8.3.4.2 The Royal tiles are made by Ross Roof Group Ltd. The base material is Zinalume a hot dip coating of Aluminium Zinc Alloy to Coating Class AZ150 of AS1397.

ACCESSORY MATERIALS

1. **E2/AS1 8.3.6** Roofing underlay shall be a self supporting breather type.
2. Rough sawn radiata pine type meeting NZS 3602:2003 of 50 x 40mm dimensions, treated H1.
3. **E2/AS1 8.3.7** All nails shall be galvanised and coated to meet AS 3566 Class 3 as a minimum specification.
4. **E2/AS1 8.3.8** Ridge hip cappings shall be supplied as standard products from Metrotile Roofing Systems.
5. **E2/AS1 8.3.8** Side flashings, barge or apron flashings are to be installed from factory made products supplied by Metrotile Roofing Systems.
6. **E2/AS1 8.3.8** Valleys may be used as supplied pre-finished in 2.4 metre lengths by Metrotile Roofing Systems or made to order out of 0.55mm coloursteel in a matching colour from a sheet metal fabricator. If made to order, valleys should have similar dimensions to those supplied by Metrotile Roofing Systems.
7. End caps to be installed where necessary to stop ingress of moisture or bird-life.

WARRANTIES

Installation Warranty:

Metrotile roofs may only be installed by trained fixers employed or contracted to a registered Metrotile Roofing Systems installer. The installation carries a 5 year fixing warranty from the distributor.

Textured and Satin Weather Security Warranty:

A 50 year pro-rata weatherproof warranty. This warranty is a full 25-year weatherproof warranty plus a diminishing pro-rata weatherproof warranty for the subsequent 25-years.

Textured Surface Coating Warranty:

A 10 year full surface coat warranty plus a diminishing pro-rata warranty for a further 10 years.

Satin Surface Coating Warranty:

A 5 year full surface coat warranty plus a diminishing pro-rata warranty for a further 10 years.

Structure (B1)

When installed according to the manufactures recommendations the Metrotile roofing products will allow provisions of NZBC B1.3.1, B1.3.2 and B1.3.4 to be met for the relevant provisions of B1.3.3.

Durability (B2)

Without recoating, the Metrotile products will meet the provisions of NZBC B2.3(C) for 15 years, when used and maintained as directed by our manufacturing installation manual.

WIND ZONES

On new roofs when fixed to battens sized and installed according to NZS 3604 or NZS 4217 Metrotile roofing systems are suitable for use in all NZS 3604 building wind zones up to and including VERY HIGH. In NZS 3604 very high building wind zones, battens are to be secured using 2 x 90 x 3.15 power driven nails for the Main & Periphery roof areas.

On existing roofs when fixed to counter battens correctly installed the Metrotile roofing systems is suitable for use in all NZS 3604 building wind zones up to and including VERY HIGH.

Counter battens should be at 600mm centres with existing purlin centres at 750mm and 450mm when centres are 900mm. at roof edge counter battens are fixed as per NZS 4217.

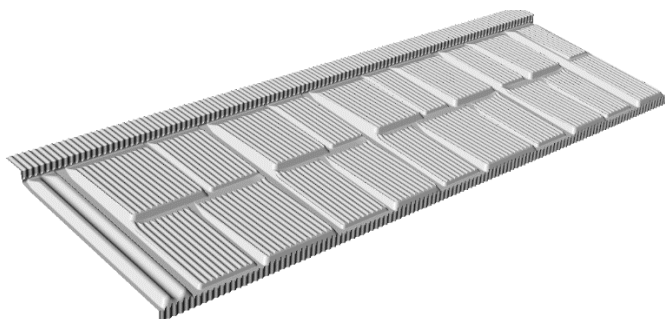
SNOW LOADING

The Metrotile roofing products are suitable for use where buildings are designed for the 1kPa snow loading.

WATER SUPPLIES (G12)

Rainwater collected from Metrotile roofs will meet the provisions of NZBC G12.3.1, providing the surface coating is maintained as directed. It is recommended that a potable water collection system is not installed until 3 good rainfalls have washed the new roof surface. Similarly when the roof is cleaned with MossBoss to remove mould and algae during maintenance the water supply should also be disconnected as directed.

SPECIFICATIONS



Metrotile Royal	Textured
Overall Length:	1350 mm
Length of Cover:	1260 mm
Width of Cover:	368 mm
Roof Cover / Tile:	0.46
Tiles / m2:	2.15
Weight / Tile:	3.0 kgs
Weight / m2:	6.40 kgs
Nailing points per tile	5
Minimum Roof Pitch:	15 deg